

## Quality Control Test Objects

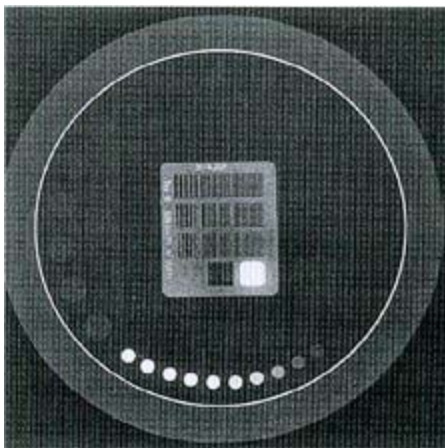
### Routine Test Objects (Continued)

#### TOR [CDR]

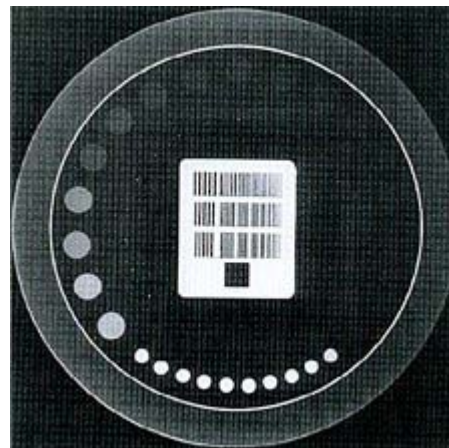
Used for conventional and non-subtractive digital radiography, enables the following checks to be made:

- Sensitometric measurements (10 Atest point@ details, 5.6mm diameter).
- Resolution limit (0.5 to 14.3 lp mm<sup>-1</sup>).
- Low-contrast large-detail detectability (17 details, 11mm diameter).
- High-contrast small-detail detectability (17 details, 0.5mm diameter).

The four objects are:



TOR[18FG] Calibrated Beam



TOR[18FG] Soft Beam

